

**TOOLTECH**<sup>®</sup>

"A" GRADE

**MACHINE TOOL**  
A C C E S S  R I E S

HARDENED AND GROUND

[www.tooltechind.com](http://www.tooltechind.com)

PRODUCT CATALOGUE

WELCOME TO

TOOLTECH

[www.tooltechind.com](http://www.tooltechind.com)



# COMPANY PROFILE

Tooltech Machine Tools Is India's Largest Manufacturing Company Of Tooling Suitable For CNC Lathes And Other Machine Tool Accessories.

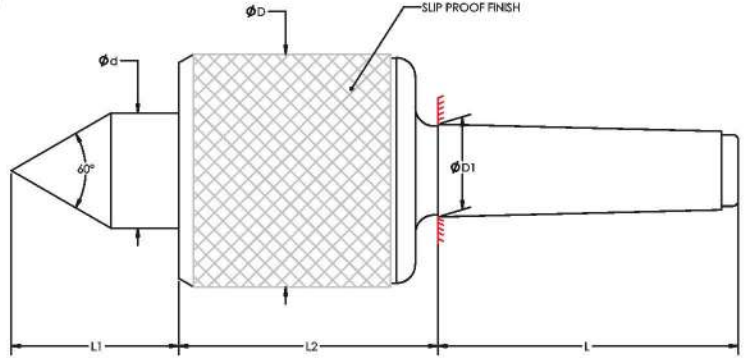
Tooltech Machine Tools Also is One Of The Brand For Quality Since 1996. The Quality is Comparable With Some Of The Best European Makes Of Germany And Italy.

The Company Has Direct Exports To Many More Countries And More Countries Are Added Every Year As A Part Of Company's Vision To Be Amongst The World's Leading Revolving Center Manufacturing Company.

We Supply Our Products To Some Of The Leading Firms In The Engineering Sector, Automobile Sector And Government And Private Sector Companies.

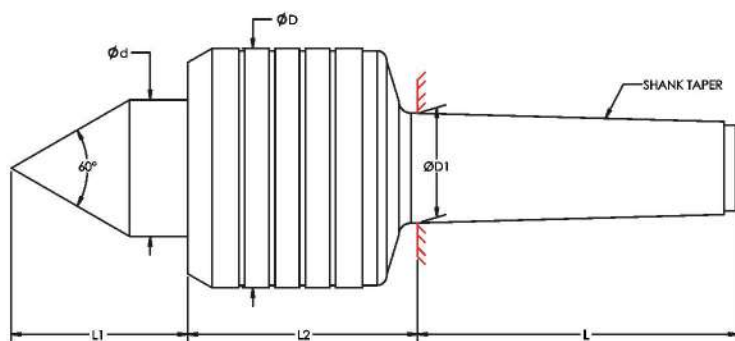
We Supply Our Products To Some Of The Leading Firms In The Engineering Sector, Automobile Sector And Government And Private Sector Companies.





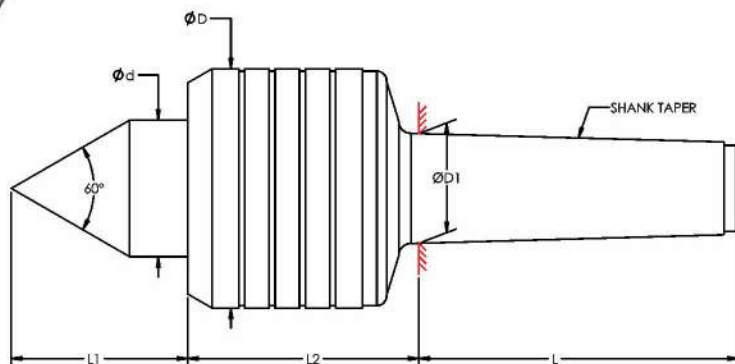
SHANK TAPER	$\phi d$	$\phi D$	$\phi D1$	L1	L2	L	MAX JOB WT. KG.	CONC. ERROR MM
MT-1	25	45	12.065	30	46.5	53.5	25	0.015
MT-2	25	52	17.780	40	59	64	50	0.015
MT-3	30	62	23.825	44	68	81	75	0.015
MT-4	33	64	31.267	48	70.5	102.5	100	0.015
MT-5	40	70	44.399	52	78.5	129.5	150	0.015
MT-6	54	105	63.348	71	90	182	200	0.015

ALSO AVAILABLE CARBIDE TIPPED & FEMALE.

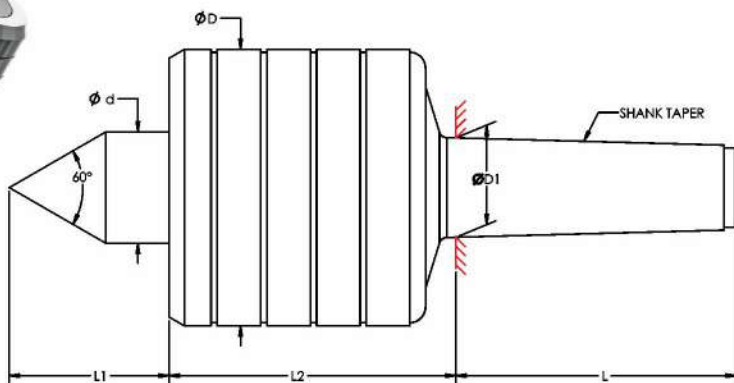


MT	$\phi d$	$\phi D$	$\phi D1$	L1	L2	L	MAX JOB WT. KG.	CONC. ERROR MM
MT-3	33	68	23.82	50	72	81	350	0.015
MT-4	34	70	31.26	50	80.5	102.5	500	0.015
MT-5	40	79	44.39	54	80.5	129.5	1250	0.015
MT-6	65	122	63.34	81	130	182	2000	0.015

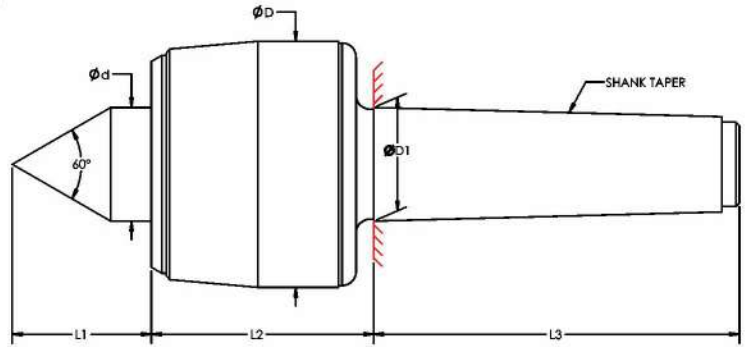
ALSO AVAILABLE CARBIDE TIPPED & FEMALE.



MT	$\phi d$	$\phi D$	$\phi D1$	L1	L2	L	MAX JOB WT. KG.	CONC. ERROR MM
MT-5	56	98	44.39	72	97.5	129.5	1750	0.015
MT-6	75	138	63.34	100	158	182	4000	0.015
MT-7	75	138	83.05	100	150	256	5000	0.015



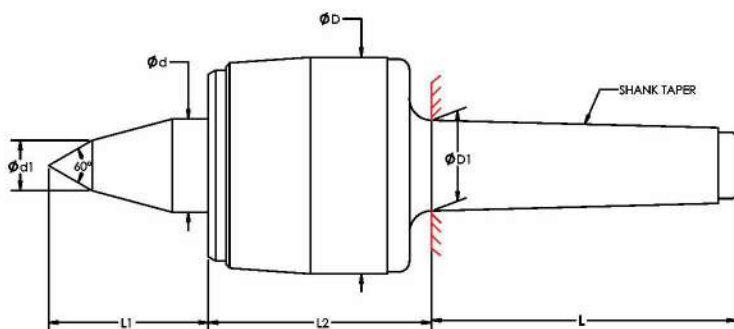
MT	$\phi d$	$\phi D$	$\phi D1$	L1	L2	L	MAX JOB WT. KG.	CONC. ERROR MM
MT-6	80	178	63.34	100	175	182	5000	0.015
MT-7	80	178	83.05	100	175	255	6500	0.015



MT	$\phi d$	$\phi D$	$\phi D1$	L1	L2	L	MAX JOB WT. KG.	CONC. ERROR MM	MAX. RPM
MT-3	25	58	23.82	32	58	81	500	0.005	5000
MT-4	32	70	31.26	40	60	102.5	800	0.005	3800
MT-5	38	87	44.39	46	74	129.5	2000	0.005	3000
MT-6	55	123	63.34	60	114	182	3500	0.01	2600

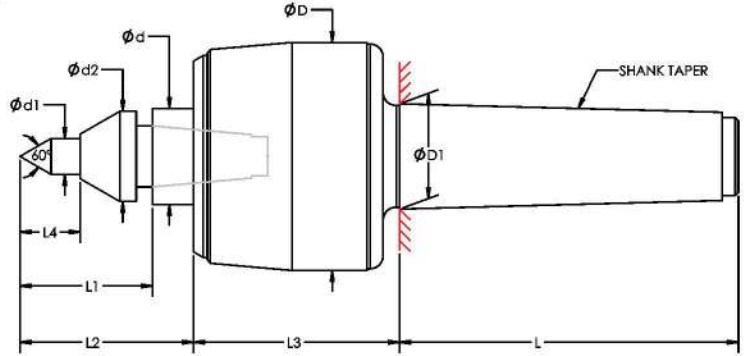
ALSO AVAILABLE CARBIDE TIPPED.



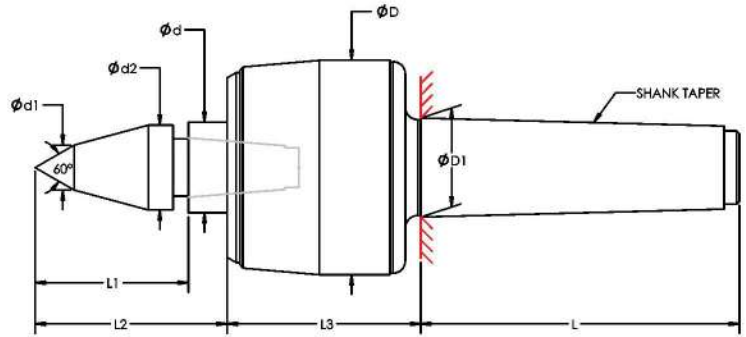


MT	$\phi d_1$	$\phi d$	$\phi D$	$\phi D_1$	L1	L2	L	MAX JOB WT. KG.	CONC. ERROR MM	MAX. RPM
MT-3	13	25	58	23.82	43	58	81	400	0.005	5000
MT-4	20	32	70	31.26	55	60.5	102.5	500	0.005	3800
MT-5	21	38	87	44.39	56	74.5	129.5	1200	0.005	3000
MT-6	25	55	123	63.34	94	114	182	2500	0.010	2600

ALSO AVAILABLE CARBIDE TIPPED.

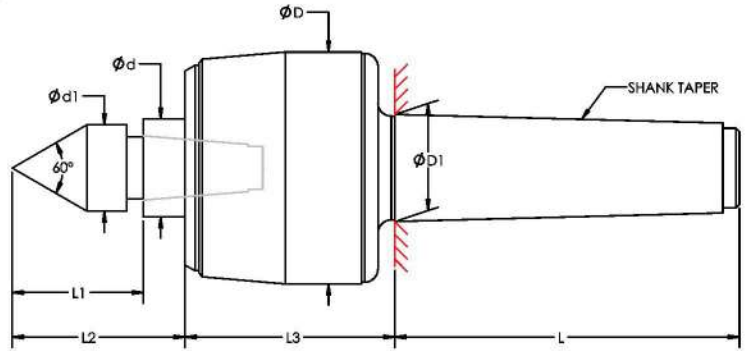


MT	$\phi d1$	$\phi d2$	$\phi d$	$\phi D$	$\phi D1$	L1	L2	L3	L4	L	MAX JOB WT. KG.	CONC. ERROR MM	MAX. RPM
MT-3	11	24	24	58	23.82	36	40	58	20	81	50	0.010	5000
MT-4	11	27	30	70	31.26	40	52	60.5	18	102.5	125	0.010	3800
MT-5	16	33	38	87	44.39	50	55	74.5	30	129.5	200	0.010	3000

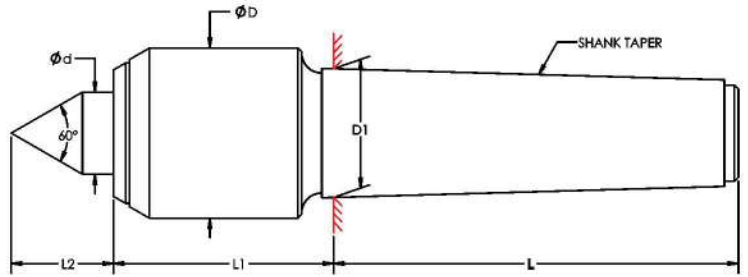


MT	$\phi d1$	$\phi d2$	$\phi d$	$\phi D$	$\phi D1$	L1	L2	L3	L	MAX JOB WT. KG.	CONC. ERROR MM	MAX. RPM
MT-3	14	24	24	58	23.82	42	46	58	81	100	0.010	5000
MT-4	14	27	30	70	31.26	50	62	60.5	102.5	200	0.010	3800
MT-5	18	32	38	87	44.39	53	58	74.5	129.5	400	0.010	3000

ALSO AVAILABLE CARBIDE TIPPED.



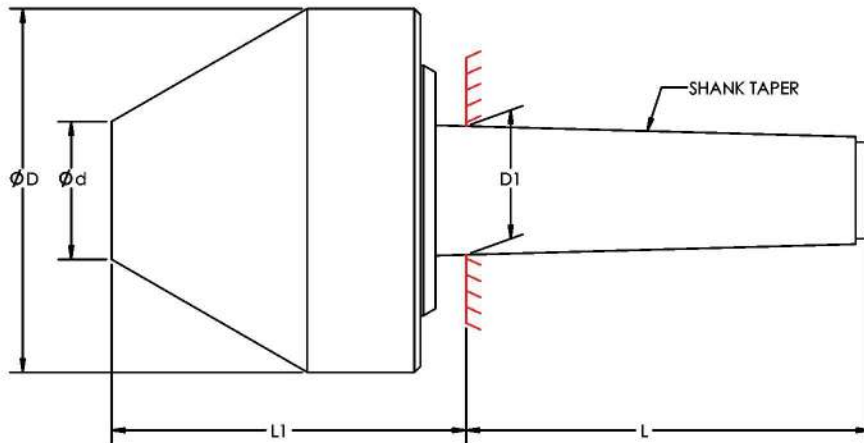
MT	$\phi d_1$	$\phi d$	$\phi D$	$\phi D_1$	L1	L2	L3	L	MAX JOB WT. KG.	CONC. ERROR MM	MAX. RPM
MT-3	24	24	58	23.82	36	40	58	81	150	0.010	5000
MT-4	26	30	70	31.26	40	52	60.5	102.5	250	0.010	3800
MT-5	32	38	87	44.39	50	55	74.5	129.5	650	0.010	3000



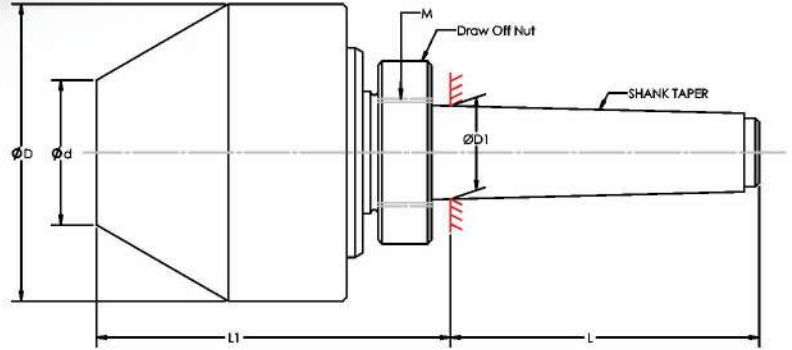
MT	$\phi d$	$\phi D$	$\phi D1$	L	L1	L2	MAX JOB WT. KG.	CONC. ERROR MM	MAX. RPM
MT-4	24	52	31.267	102.5	58	35	800	0.005	6300
MT-5	24	58	44.399	129.5	58	35	1600	0.010	4300



**PIPE CENTRE BLUNT**  
60° ANGLE REVOLVING CONE

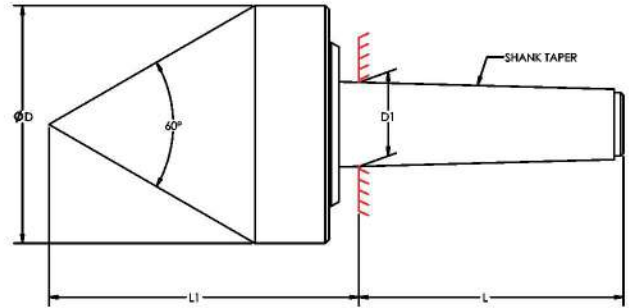


MODEL	SHANK TAPER	Ød	ØD	ØD1	L	L1	CONC. ERROR	MAX RPM
MT-2 25-50	MT-2	25	50	17.780	64	70	0.015	750
MT-2 30-65	MT-2	30	65	17.780	64	72	0.015	750
MT-2 40-75	MT-2	40	75	17.780	64	75	0.015	600
MT-3 25-50	MT-3	25	50	23.825	81	70	0.015	750
MT-3 30-65	MT-3	30	65	23.825	81	72	0.015	750
MT-3 40-75	MT-3	40	75	23.825	81	75	0.015	600
MT-3 50-90	MT-3	50	90	23.825	81	75	0.015	600
MT-3 65-100	MT-3	65	100	23.825	81	76	0.015	50
MT-3 75-125	MT-3	75	125	23.825	81	98	0.015	350
MT-3 75-150	MT-3	75	150	23.825	81	100	0.015	350
MT-4 25-50	MT-4	25	50	31.267	102.5	71.5	0.015	750
MT-4 30-65	MT-4	30	65	31.267	102.5	73.5	0.015	750
MT-4 40-75	MT-4	40	75	31.267	102.5	76.5	0.015	600
MT-4 50-90	MT-4	50	90	31.267	102.5	76.5	0.015	600
MT-4 65-100	MT-4	65	100	31.267	102.5	77.5	0.015	500
MT-4 75-125	MT-4	75	125	31.267	102.5	98.5	0.015	350
MT-4 75-150	MT-4	75	150	31.267	102.5	101.5	0.015	300
MT-4 100-175	MT-4	100	175	31.267	102.5	109.5	0.015	250
MT-4 100-200	MT-4	100	200	31.267	102.5	112.5	0.015	250
MT-5 25-50	MT-5	25	50	44.399	129.5	71.5	0.015	750
MT-5 30-65	MT-5	30	65	44.399	129.5	73.5	0.015	750
MT-5 40-75	MT-5	40	75	44.399	129.5	76.5	0.015	600
MT-5 50-90	MT-5	50	90	44.399	129.5	76.5	0.015	600
MT-5 65-100	MT-5	65	100	44.399	129.5	77.5	0.015	500
MT-5 75-125	MT-5	75	125	44.399	129.5	98.5	0.015	350
MT-5 75-150	MT-5	75	150	44.399	129.5	101.5	0.015	300
MT-5 100-175	MT-5	100	175	44.399	129.5	109.5	0.015	250
MT-5 100-200	MT-5	100	200	44.399	129.5	112.5	0.015	250
MT-5 100-250	MT-5	100	250	44.399	129.5	160.5	0.015	200
MT-6 65-100	MT-6	65	100	63.348	182	79	0.015	500
MT-6 75-125	MT-6	75	125	63.348	182	100	0.015	350
MT-6 75-150	MT-6	75	150	63.348	182	103	0.015	300
MT-6 100-175	MT-6	100	175	63.348	182	111	0.015	250
MT-6 100-200	MT-6	100	200	63.348	182	114	0.015	250
MT-6 100-250	MT-6	100	250	63.348	182	164	0.015	200
MT-6 200-275	MT-6	200	275	63.348	182	118	0.015	150



PART MO.	SHANK TAPER	$\varnothing d$	$\varnothing D$	$\varnothing D1$	L	L1	MAX JOB WT. KG.	MAX RPM
MT-3 40-75	MT-3	40	75	23.824	81	91.5	150	3500
MT-4 40-75	MT-4	40	75	31.267	102.5	95	200	3500
MT-5 40-75	MT-5	40	75	44.399	129.5	95	300	3500
MT-3 50-90	MT-3	50	90	23.825	81	93	200	2250
MT-4 50-90	MT-4	50	90	31.267	102.5	98.5	300	2250
MT-5 50-90	MT-5	50	90	44.399	129.5	96.5	400	2250
MT-6 50-90	MT-6	50	90	63.348	182	98.5	400	2250
MT-4 65-100	MT-4	65	100	31.267	102.5	92	400	1750
MT-5 65-100	MT-5	65	100	44.399	129.5	93	500	1750
MT-6 65-100	MT-6	65	100	63.348	182	96.5	800	1750
MT-4 75-150	MT-4	75	150	31.267	102.5	115	500	1250
MT-5 75-150	MT-5	75	150	44.399	129.5	116	700	1250
MT-6 75-150	MT-6	75	150	63.348	182	119.5	1000	1250



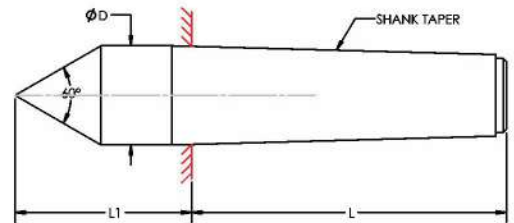


MODEL	SHANK TAPER	ØD	ØD1	L	L1	CONC. ERROR	MAX RPM
MT-2 0-2"	MT-2	50	17.780	64	92	0.015	750
MT-2 0-2 1/2"	MT-2	65	17.780	64	98	0.015	750
MT-2 0-3"	MT-2	75	17.780	64	110	0.015	600
MT-3 0-2"	MT-3	50	23.825	81	92	0.015	750
MT-3 0-2 1/2"	MT-3	65	23.825	81	98	0.015	750
MT-3 0-3"	MT-3	75	23.825	81	110	0.015	600
MT-3 0-3 1/2"	MT-3	90	23.825	81	119	0.015	600
MT-3 0-4"	MT-3	100	23.825	81	132	0.015	500
MT-3 0-5"	MT-3	125	23.825	81	163	0.015	350
MT-4 0-2"	MT-4	50	31.267	102.5	93.5	0.015	750
MT-4 0-2 1/2"	MT-4	65	31.267	102.5	99.5	0.015	750
MT-4 0-3"	MT-4	75	31.267	102.5	111.5	0.015	600
MT-4 0-3 1/2"	MT-4	90	31.267	102.5	120.5	0.015	600
MT-4 0-4"	MT-4	100	31.267	102.5	133.5	0.015	500
MT-4 0-5"	MT-4	125	31.267	102.5	163.5	0.015	350
MT-5 0-2"	MT-5	50	44.399	129.5	93.5	0.015	750
MT-5 0-2 1/2"	MT-5	65	44.399	129.5	99.5	0.015	750
MT-5 0-3"	MT-5	75	44.399	129.5	111.5	0.015	600
MT-5 0-3 1/2"	MT-5	90	44.399	129.5	120.5	0.015	600
MT-5 0-4"	MT-5	100	44.399	129.5	133.5	0.015	500
MT-5 0-5"	MT-5	125	44.399	129.5	163.5	0.015	350
MT-6 0-4"	MT-6	100	63.348	182	135	0.015	500
MT-6 0-5"	MT-6	125	63.348	182	165	0.015	350



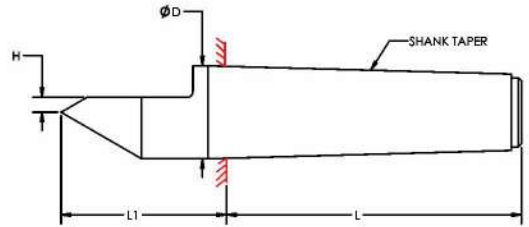
**PLAIN DEAD CENTRE**

MT	L	L1	ØD
MT-1	53.5	26.5	12.2
MT-2	64	36	18
MT-3	84	44	24.1
MT-4	102.5	57.5	31.6
MT-5	129.5	70.5	44.7
MT-6	182	88	63.8



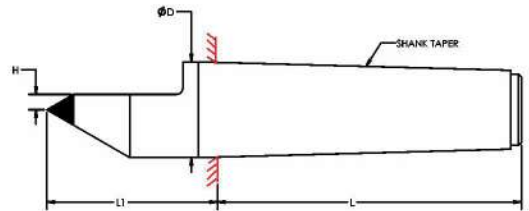
**HALF DEAD CENTRE**

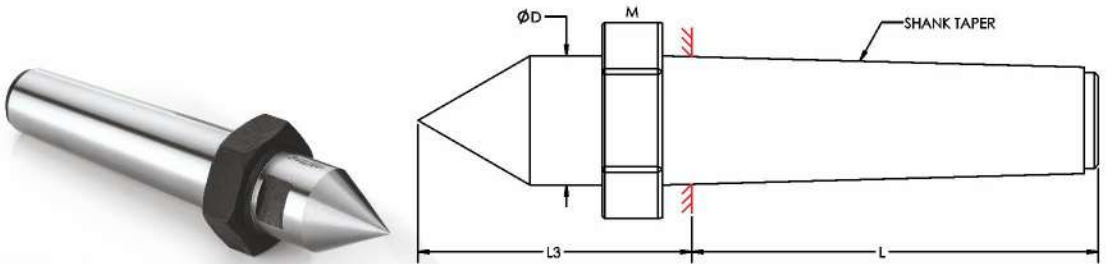
MT	L	L1	ØD	h
MT-1	53.5	26.5	12.2	2
MT-2	64	36	18	2.6
MT-3	84	44	24.1	3.45
MT-4	102.5	57.5	31.6	5.2
MT-5	129.5	70.5	44.7	11.65
MT-6	182	88	63.8	10.1



**C.T. DEAD CENTRE HALF**

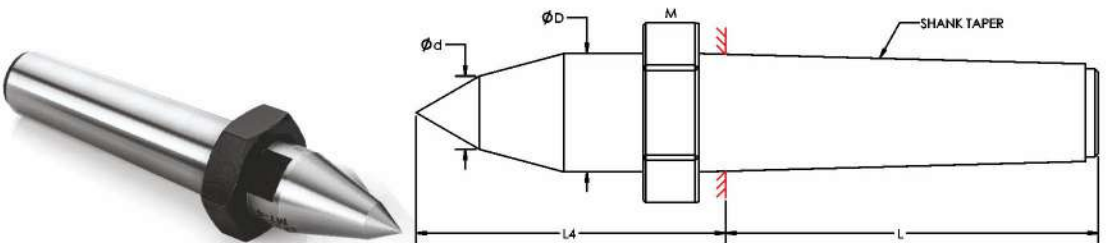
MT	L	L1	ØD	h1
MT-1	53.5	26.5	12.2	3.15
MT-2	64	36	18	5.6
MT-3	84	44	24.1	7
MT-4	102.5	57.5	31.6	8.7
MT-5	129.5	70.5	44.7	10.7
MT-6	182	88	63.8	11.1





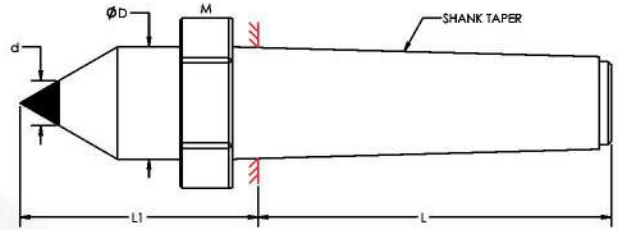
**CNC DEAD CENTRE STUB**

MT	L	L3	ØD	M
MT-2	64	48	18	22x1.5
MT-3	84	57	24.1	27x1.5
MT-4	102.5	72.5	31.6	36x1.5
MT-5	129.5	87.5	44.7	48x1.5
MT-6	182	108	63.8	68x1.5



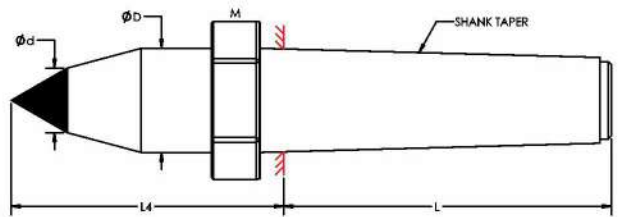
**CNC DEAD CENTRE EXTENDED**

MT	L	L4	ØD	Ød	M
MT-2	64	61.5	18	10	22x1.5
MT-3	84	70	24.1	11	27x1.5
MT-4	102.5	83.5	31.6	14	36x1.5
MT-5	129.5	90	44.7	18	48x1.5
MT-6	182	124	63.8	24	68x1.5



**CNC DEAD CENTRE STUB**

MT	L	L1	ØD	d	M
MT-3	84	44	24.1	11	27x1.5
MT-4	102.5	57.5	31.6	14	36x1.5
MT-5	129.5	70.5	44.7	18	48x1.5
MT-6	182	88	63.8	18	68x1.5



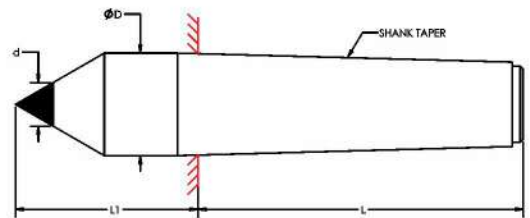
**CNC DEAD CENTRE EXTENDED - CARBIDE TIPPED**

MT	L	L4	ØD1	d	M
MT-3	84	70	24.1	11	27x1.5
MT-4	102.5	83.5	31.6	14	36x1.5
MT-5	129.5	90	44.7	18	48x1.5
MT-6	182	124	63.8	18	68x1.5



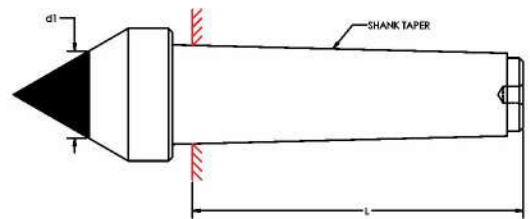
**DEAD CENTRE FULL - CARBIDE TIPPED**

MT	L	L1	ØD	d
MT-1	53.5	26.5	12.2	5
MT-2	64	36	18	8
MT-3	84	44	24.1	11
MT-4	102.5	57.5	31.6	14
MT-5	129.5	70.5	44.7	18
MT-6	182	88	63.8	18



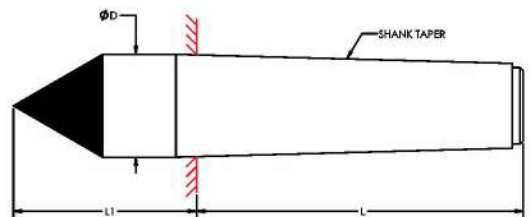
**SPECIAL CARBIDE TIPPED DEAD CENTRE**

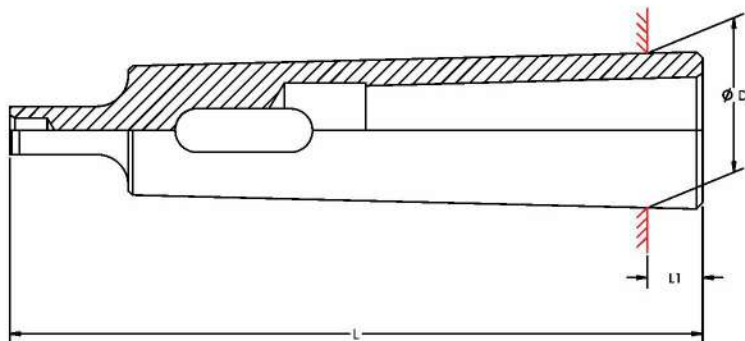
MT	L	d1
MT-2	64	14,18,22,25,28
MT-3	84	14,18,22,25,28,30,32,35,40
MT-4	102.5	18,22,25,28,30,32,35,40
MT-5	129.5	22,25,28,30,32,35,40



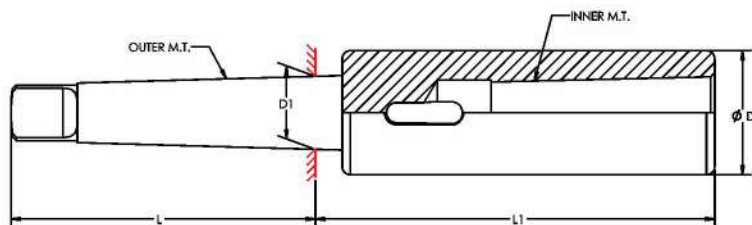
**FULL CARBIDE TIPPED DEAD CENTRE**

MT	L	L1	ØD
MT-2	64	36	18
MT-3	84	44	24.1
MT-4	102.5	57.5	31.6
MT-5	129.5	70.5	44.7

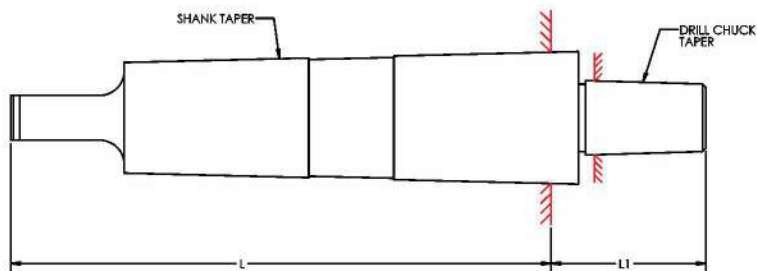




MODEL NO	INNER M.T.	OUTER M.T.	L	L1	D	WEIGHT KG.
MT 0-1	0	1	80	14	12.065	0.040
MT 1-2	1	2	91	17	17.780	0.100
MT 1-3	1	3	98	5	23.825	0.215
MT 1-4	1	4	123	6.5	31.267	0.515
MT 1-5	1	5	155	6.5	44.399	0.460
MT 1-6	1	6	217	8	63.348	4.600
MT 2-3	2	3	111	18	23.825	0.185
MT 2-4	2	4	123	6.5	31.267	0.445
MT 2-5	2	5	155	6.5	44.399	1.410
MT 2-6	2	6	217	8	63.348	4.700
MT 3-4	3	4	137	22.5	31.267	0.380
MT 3-5	3	5	155	6.5	44.399	1.230
MT 3-6	3	6	217	8	63.348	4.400
MT 4-5	4	5	170	21.5	44.399	1.100
MT 4-6	4	6	217	8	63.348	4.000
MT 5-6	5	6	217	8	63.348	3.100
MT 5-7	5	7	292	9.5	83.05	
MT 6-7	6	7	292	9.5	83.05	

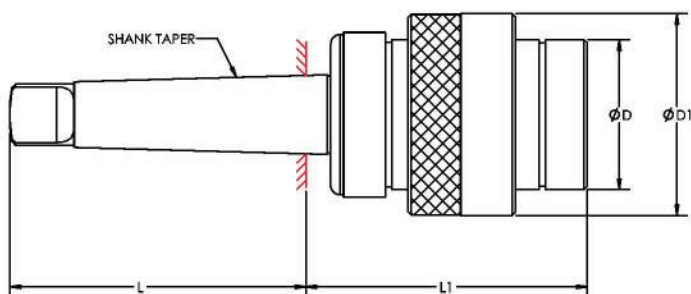


MODEL NO	OUTER M.T.	INNER M.T.	ØD	ØD1	L	L1	WEIGHT KG.
1-1	1	1	20	12.065	62	83	0.225
1-2	1	2	30	12.065	62	98	0.460
2-1	2	1	20	17.780	75	85	0.310
2-2	2	2	30	17.780	75	100	0.535
2-3	2	3	36	17.780	75	121	0.800
3-1	3	1	20	23.825	96	79	0.475
3-2	3	2	30	23.825	94	100	0.740
3-3	3	3	36	23.825	94	121	0.985
3-4	3	4	48	23.825	94	146	1.690
4-1	4	1	20	31.267	117.5	82.5	0.805
4-2	4	2	30	31.267	117.5	97.5	1.060
4-3	4	3	36	31.267	117.5	122.5	1.315
4-4	4	4	48	31.267	117.5	147.5	2.095
4-5	4	5	63	31.267	117.5	182.5	3.500
5-1	5	1	20	44.399	149.5	82.5	1.800
5-2	5	2	30	44.399	149.5	97.5	1.990
5-3	5	3	36	44.399	149.5	118.5	2.0275
5-4	5	4	48	44.399	149.5	150.5	3.300
5-5	5	5	63	44.399	149.5	185.5	4.800
5-6	5	6	83	44.399	149.5	247.5	8.100
6-2	6	2	30	63.348	210	99	5.200
6-3	6	3	36	63.348	210	120	6.000
6-4	6	4	48	63.348	210	145	6.300
6-5	6	5	61	63.348	210	180	7.500

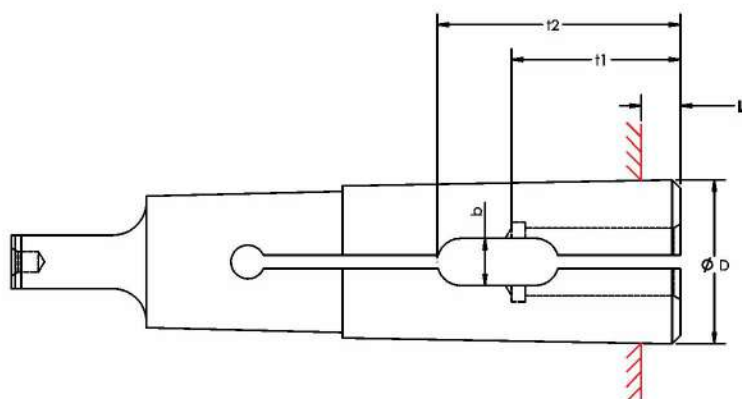


MODEL NO	SHANK TAPER	DRILL CHUCK TAPER	L	L1	WEIGHT KG.
1/4" (J)	MT-1	JT-1	62	24	0.062
3/8" (J)	MT-1	JT-2	62	33	0.085
1/2" (J)	MT-1	JT-6	62	32	0.095
1/4" (J)	MT-2	JT-1	75	25	0.155
3/8" (J)	MT-2	JT-2	75	32	0.155
1/2" (J)	MT-2	JT-6	75	33	0.210
3/8" (J)	MT-2	JT-3	75	41	0.210
1/2" (J)	MT-3	JT-6	94	33	0.317
3/8" (J)	MT-3	JT-3	94	41	0.360
1/2" (J)	MT-4	JT-6	117.5	34.5	0.635
3/8" (J)	MT-4	JT-3	117.5	42.5	0.680
1/2" (J)	MT-5	JT-6	149.5	34.5	1.645
3/8" (J)	MT-5	JT-3	149.5	42.5	1.690

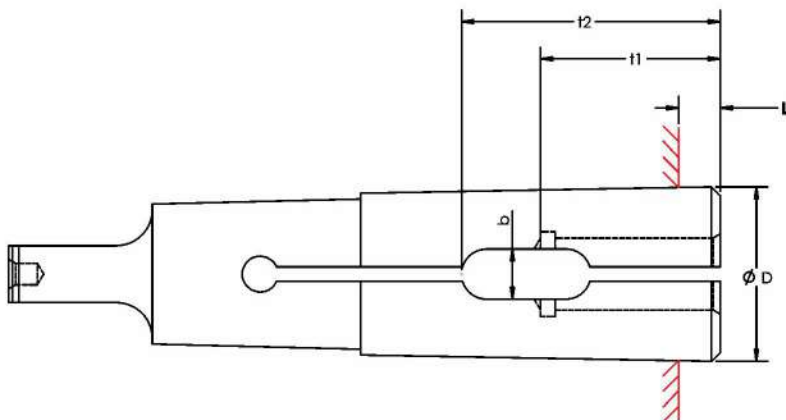




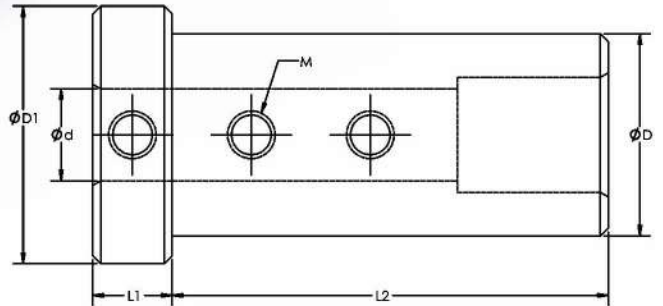
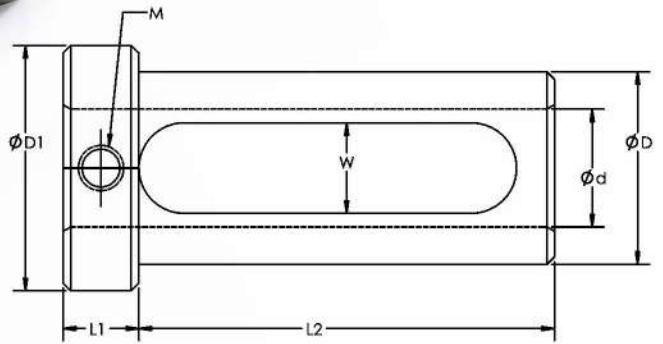
MODEL NO.	L	L1	BORE SIZE	ØD	ØD1	SUITABLE FOR COLLETS / FR	WEIGHT KG.
Q.C.C.MT-2	75	75	26	36	48	CO-21,22/FR-21,22	0.730
Q.C.C.MT-3	94	86	34	46	61	CO-31,32,33/FR-31,32,33	1.400
Q.C.C.MT-4	117.5	97.5	46	62	85	CO-41,42,43,44/FR-41,42,43,44	2.900
Q.C.C.MT-5	149.5	122.5	60	80	104	CO-51,52,53,54,55/FR-51,52,53,54,55	9.100



ØD RANGE		MT-1		MT-2			MT-3				
ABOVE	UPTO	b	t1	t2	b	t1	t2	n	t1	t2	
2.9	3.5	1.8	20	25							
3.5	4.0	2.2									
4.0	4.5	2.4									
4.5	5.5	2.7		26							
55.0	6.5	3.2	22	29	3.2	22	29				
6.5	8.0	3.8			3.8						
8.0	9.5				4.8	25	33	4.8	25	33	
9.5	11				5.3		37	5.3		37	
11	13				6.3	28	39	6.3	28	39	
13	15							7.4		44	
15	18							8.4	32	46	
L			3.5			5			5		



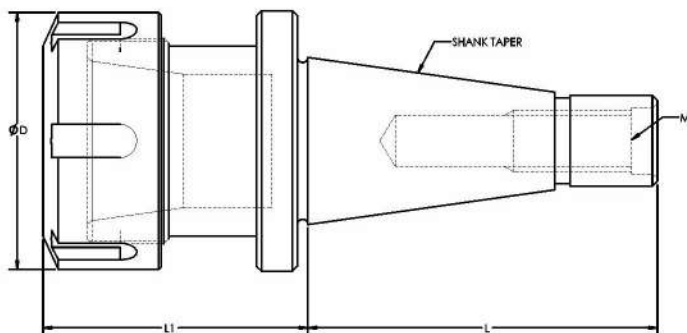
ØD RANGE		MT-1			MT-2			MT-3					
ABOVE	UPTO	b	t1	t2	b	t1	t2	n	t1	t2			
3.0	3.35	2.6	18	22									
3.35	3.75	2.9											
3.75	4.25	3.3											
4.25	4.75	3.7			24	25							
4.75	5.30	4.2											
5.30	6.0	4.7						4.7	19	25			
6.00	6.7	5.2	19	25	5.2								
6.70	7.5	5.8	22	28	5.8	22	28						
7.60	8.5	6.5	23	30	6.5	23	30	6.5	23	30			
8.50	9.5				7.4	24		7.4	24	32			
9.50	10.6				8.3	23	32	8.3	23				
10.6	11.8				9.3			9.3					
11.8	13.2				10.3	26	36	10.3	26	36			
13.2	15.0							11.5	29	40			
15.0	17.0							12.8	32	45			
17.0	19.0							14.4	36	50			



	ØD	Ød	ØD1	W	L1	L2	M	FIG.
16x8	16	8	22	-	10	55	M6	2
16X10	16	10	22	-	10	55	M6	2
20X8	20	8	26	-	10	55	M6	2
20X10	20	10	26	-	10	55	M6	2
20X12	20	12	26	-	10	55	M6	2
25X8	25	8	32	-	10	55	M6	2
25X10	25	10	32	-	10	55	M6	2
25X12	25	12	32	-	10	55	M6	2
25X16	25	16	32	12	10	55	M6	1
32X8	32	8	39	-	10	55	M6	2
32X10	32	10	39	-	10	55	M6	2
32X12	32	12	39	-	10	55	M6	2
32X16	32	16	39	12	10	55	M6	1
32X20	32	20	39	12	10	55	M6	1
32X25	32	25	39	12	10	55	M6	1
40X8	40	8	48	-	10	80	M6	2
40X10	40	10	48	-	10	80	M6	2
40X12	40	12	48	-	10	80	M6	2
40X16	40	16	48	12	10	80	M6	1
40X20	40	20	48	12	10	80	M6	1
40X25	40	25	48	12	10	80	M6	1
40X32	40	32	48	12	10	80	M6	1
50X8	50	8	58	-	10	85	M6	2
50X10	50	10	58	-	10	85	M6	2
50X12	50	12	58	-	10	85	M6	2
50X16	50	16	58	12	10	85	M6	1
50X20	50	20	58	12	10	85	M6	1
50X25	50	25	58	12	10	85	M6	1
50X32	50	32	58	12	10	85	M6	1
50X40	50	40	58	12	10	85	M6	1



OD	ID (MT)	LENGTH
Ø25	MT-1	70
Ø25	MT-2	80
Ø32	MT-1	80
Ø32	MT-2	85
Ø32	MT-3	100
Ø40	MT-1	85
Ø40	MT-2	85
Ø40	MT-3	90
Ø40	MT-4	120
Ø50	MT-1	90
Ø50	MT-2	90
Ø50	MT-3	96
Ø50	MT-4	120
Ø50	MT-5	150

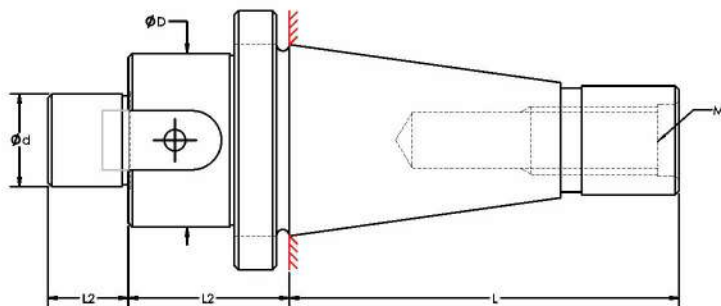


COLLET ADAPTOR 'E' TYPE ISO TAPER

MODEL	SHANK TAPER	SUITABLE COLLET	L	L1	ØD	M
ISO-30E-40	ISO-30	E-40	68.4	90	65	M12
ISO-40E-40	ISO-40	E-40	93.4	55	65	M16
ISO-50E-40	ISO-50	E-40	126.8	55	65	M24
ISO-40E-45	ISO-40	E-45	93.4	70	71	M16
ISO-50E-45	ISO-50	E-45	126.8	70	74	M24

COLLET ADAPTOR 'ER' TYPE ISO TAPER

MODEL	SHANK TAPER	SUITABLE COLLET	L	L1	ØD	M
ISO-30 ER-32	ISO-30	ER-32	68.4	50	50	M12
ISO-30 ER-40	ISO-30	ER-40	68.4	70	63	M12
ISO-40 ER-32	ISO-40	ER-32	93.4	50	50	M16
ISO-40 ER-40	ISO-40	ER-40	93.4	70	63	M16
ISO-50 ER-32	ISO-50	ER-32	126.8	50	50	M24
ISO-50 ER-40	ISO-50	ER-40	126.8	70	63	M24



SHANK TAPER	SIZE	L	L1	L2	Ød	ØD	M
ISO-30	16	68.4	34.6	17	16	32	M12
ISO-30	22	68.4	34.6	19	22	40	M12
ISO-30	27	68.4	34.6	21	27	48	M12
ISO-40	16	93.4	34.6	17	16	32	M16
ISO-40	22	93.4	34.6	19	22	40	M16
ISO-40	27	93.4	34.6	21	27	48	M16
ISO-40	32	93.4	51.6	24	32	58	M16
ISO-50	16	126.8	40.2	17	16	32	M24
ISO-50	22	126.8	40.2	19	22	40	M24
ISO-50	27	126.8	55.2	21	27	48	M24
ISO-50	32	126.8	55.2	24	32	58	M24
ISO-50	40	126.8	55.2	27	40	70	M24



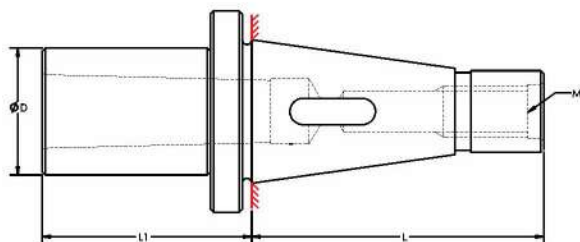


FIG-1

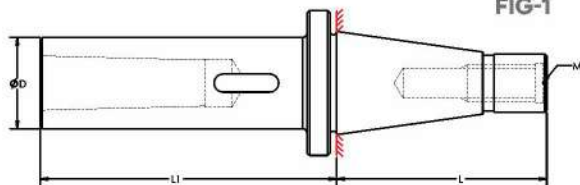


FIG-2

SHANK TAPER	MODEL	INTERNAL TAPER	L	L1	ØD	M
ISO-30	MT-1A	MT-1	68.4	50	25	M12
ISO-30	MT-1 A (EXTENDED)	MT-1	68.4	92	25	M12
ISO-30	MT-2A	MT-2	68.4	50	32	M12
ISO-30	MT-2 A (EXTENDED)	MT-2	68.4	105	32	M12
ISO-30	MT-3A	MT-3	68.4	70	40	M12
ISO-30	MT-3 A (EXTENDED)	MT-3	68.4	125	40	M12
ISO-40	MT-1A	MT-1	93.4	50	25	M16
ISO-40	MT-1 A (EXTENDED)	MT-1	93.4	95	25	M16
ISO-40	MT-2A	MT-2	93.4	50	32	M16
ISO-40	MT-2A(EXTENDED)	MT-2	93.4	108	32	M16
ISO-40	MT-3A	MT-3	93.4	65	40	M16
ISO-40	MT-3A(EXTENDED)	MT-3	93.4	130	40	M16
ISO-40	MT-4A	MT-4	93.4	95	28	M16
ISO-40	MT-4 A (EXTENDED)	MT-4	93.4	155	28	M16
ISO-50	MT-1A	MT-1	126.8	50	25	M24
ISO-50	MT-1 A (EXTENDED)	MT-1	126.8	100	25	M24
ISO-50	MT-2A	MT-2	126.8	60	32	M24
ISO-50	MT-2 A (EXTENDED)	MT-2	126.8	113	32	M24
ISO-50	MT-3A	MT-3	126.8	65	40	M24
ISO-50	MT-3 A (EXTENDED)	MT-3	126.8	135	40	M24
ISO-50	MT-4A	MT-4	126.8	70	48	M24
ISO-50	MT-4 A (EXTENDED)	MT-4	126.8	160	48	M24
ISO-50	MT-5A	MT-5	126.8	105	63	M24
ISO-50	MT-5 A (EXTENDED)	MT-5	126.8	190	63	M24

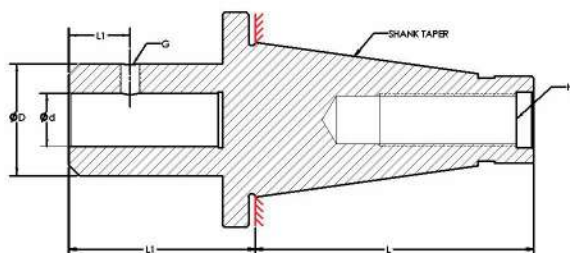


FIG-1

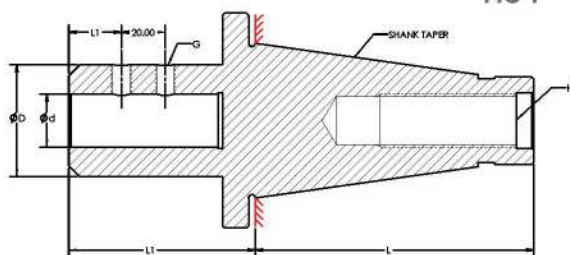
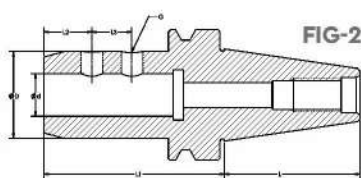
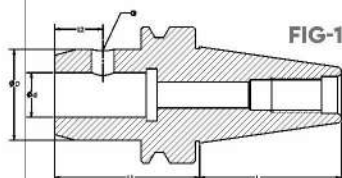
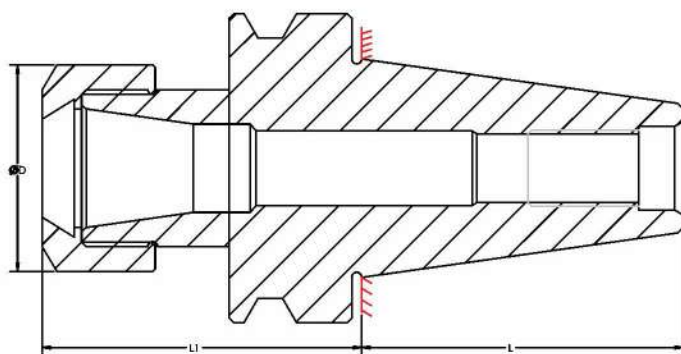


FIG-2

SHANK TAPER	SIZE	L	L1	L2	$\varnothing d$	$\varnothing D$	G	H	FIG.
ISO-30	12	68.4	57.5	16	12	35	M10	M12	1
ISO-30	16	68.4	57.5	23	16	40	M10	M12	1
ISO-30	20	68.4	72.5	25	20	50	M10	M12	2
ISO-30	25	68.4	87.5	25	25	50	M10	M12	2
ISO-30	32	68.4	94.5	30	32	60	M10	M12	2
ISO-30	40	68.4	94.5	30	40	60	M10	M12	2
ISO-40	12	93.4	59.5	16	12	35	M10	M16	1
ISO-40	16	93.4	59.5	23	16	40	M10	M16	1
ISO-40	20	93.4	64.5	25	20	50	M10	M16	2
ISO-40	25	93.4	76.5	25	25	50	M10	M16	2
ISO-40	32	93.4	81.5	30	32	60	M10	M16	2
ISO-40	40	93.4	96.5	30	40	60	M10	M16	2
ISO-50	12	126.8	63	16	12	35	M10	M24	1
ISO-50	16	126.8	63	23	16	40	M10	M24	1
ISO-50	20	126.8	68	25	20	50	M10	M24	2
ISO-50	25	126.8	80	25	25	50	M10	M24	2
ISO-50	32	126.8	80	30	32	60	M10	M24	2
ISO-50	40	126.8	80	30	40	60	M10	M24	2

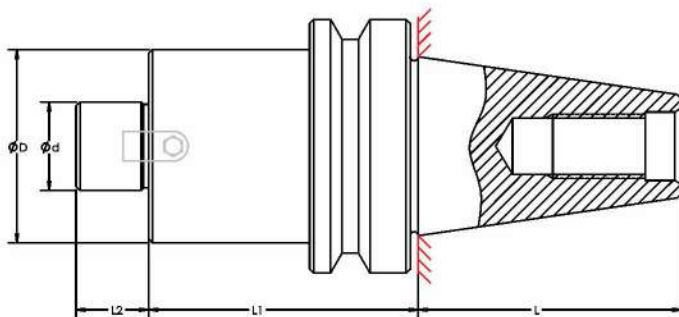


SHANK TAPER	SIZE	Ød	ØD	L	L1	L2	L3	G	FIG.
BT-30	12 X 50	12	42	48.4	50	22	-	M10	1
BT-30	16 X 63	16	48	48.4	63	23	-	M16	1
BT-30	20 X 63	20	52	48.4	63	24	-	M16	1
BT-30	25 X 80	25	65	48.4	80	24	-	M12	1
BT-30	32 X 90	32	65	48.4	90	24	-	M16	1
BT-40	12 X 63	12	42	65.4	63	22	-	M10	1
BT-40	16 X 63	16	48	65.4	63	23	-	M12	1
BT-40	16 X 120	16	48	65.4	120	23	-	M12	1
BT-40	20 X 63	20	52	65.4	63	24	-	M16	1
BT-40	20 X 120	20	52	65.4	120	24	-	M16	1
BT-40	25 X 90	25	50	65.4	90	24	25	M12	2
BT-40	25 X 150	25	62	65.4	150	24	25	M12	2
BT-40	32 X 100	32	62	65.4	100	24	28	M16	2
BT-40	32 X 150	32	62	65.4	150	24	28	M16	2
BT-40	40 X 100	40	62	65.4	100	25	28	M16	2
BT-40	40 X 150	40	62	65.4	150	25	28	M16	2
BT-50	16 X 85	16	48	101.8	85	24	-	M12	1
BT-50	16 X 150	16	48	101.8	150	24	-	M12	1
BT-50	16 X 200	16	48	101.8	200	24	-	M12	1
BT-50	20 X 100	20	52	101.8	100	24	-	M16	1
BT-50	20 X 150	20	52	101.8	150	24	-	M16	1
BT-50	20 X 200	20	52	101.8	200	24	-	M16	1
BT-50	25 X 100	25	62	101.8	100	24	25	M16	2
BT-50	25 X 150	25	62	101.8	150	24	25	M16	2
BT-50	25 X 200	25	62	101.8	200	24	25	M16	2
BT-50	32 X 105	32	62	101.8	105	24	28	M16	2
BT-50	32 X 150	32	62	101.8	150	24	28	M16	2
BT-50	32 X 200	32	62	101.8	200	24	28	M16	2
BT-50	40 X 105	40	62	101.8	105	25	28	M16	2
BT-50	40 X 150	40	62	101.8	150	25	28	M16	2
BT-50	40 X 200	40	62	101.8	200	25	28	M16	2
BT-50	50 X 100	50	62	101.8	100	25	28	M16	2



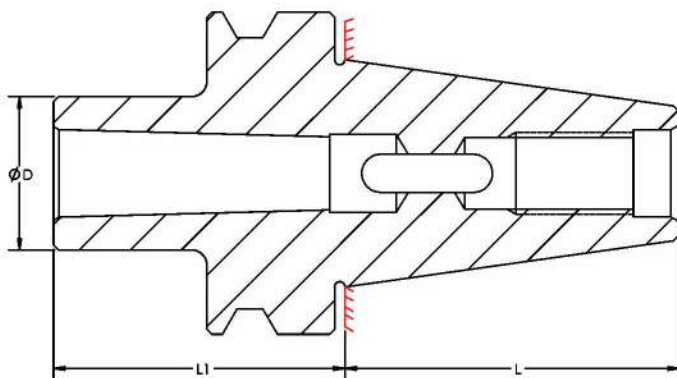
SHANK TAPER	SIZE	SUITABLE COLLET	L1	L	ØD	NUT
BT-30	ER11 X 70	ER11	70	48.4	19	A(Hex. Type)
BT-30	ER11 X 100	ER11	100	48.4	19	A(Hex. Type)
BT-30	ER16 X 70	ER16	70	48.4	28	A(Hex. Type)
BT-30	ER16 X 100	ER16	100	48.4	28	A(Hex. Type)
BT-30	ER20 X 70	ER20	70	48.4	34	A(Hex. Type)
BT-30	ER20 X 100	ER20	100	48.4	34	A(Hex. Type)
BT-30	ER25 X 70	ER25	70	48.4	42	UM(Round Type)
BT-30	ER25 X 100	ER25	100	48.4	42	UM(Round Type)
BT-30	ER32 X 70	ER32	70	48.4	50	UM(Round Type)
BT-30	ER32 X 100	ER32	100	48.4	50	UM(Round Type)
BT-30	ER40 X 80	ER40	80	48.4	63	UM(Round Type)
BT-30	ER40 X 100	ER40	100	48.4	63	UM(Round Type)
BT-40	ER11A X 70	ER11	70	65.4	19	A(Hex. Type)
BT-40	ER11A X 100	ER11	100	65.4	19	A(Hex. Type)
BT-40	ER11A X 150	ER11	150	65.4	19	A(Hex. Type)
BT-40	ER16A/M X 70	ER16	70	65.4	28	A/M(Hex/Mini Type)
BT-40	ER16A/M X 100	ER16	100	65.4	28	A/M(Hex/Mini Type)
BT-40	ER16 X 120	ER16	120	65.4	28	A(Hex. Type)
BT-40	ER16A/M X 150	ER16	150	65.4	28	A/M(Hex/Mini Type)
BT-40	ER16 X 200	ER16	200	65.4	28	A(Hex. Type)

BT-40	ER20 X70	ER20	70	65.4	34	A(Hex. Type)
BT-40	ER20 X100	ER20	100	65.4	34	A(Hex. Type)
BT-40	ER20 X120	ER20	120	65.4	34	A(Hex. Type)
BT-40	ER20 X150	ER20	150	65.4	34	A(Hex. Type)
BT-40	ER25 X70	ER25	70	65.4	42	UM(Round Type)
BT-40	ER25 X100	ER25	100	65.4	42	UM(Round Type)
BT-40	ER25 X120	ER25	120	65.4	42	UM(Round Type)
BT-40	ER25 X150	ER25	150	65.4	42	UM(Round Type)
BT-40	ER25 X200	ER25	200	65.4	42	UM(Round Type)
BT-40	ER32 X70	ER32	70	65.4	50	UM(Round Type)
BT-40	ER32 X100	ER32	100	65.4	50	UM(Round Type)
BT-40	ER32 X120	ER32	120	65.4	50	UM(Round Type)
BT-40	ER32 X150	ER32	150	65.4	50	UM(Round Type)
BT-40	ER32 X200	ER32	200	65.4	50	UM(Round Type)
BT-40	ER32 X250	ER32	250	65.4	50	UM(Round Type)
BT-40	ER32 X300	ER32	300	65.4	50	UM(Round Type)
BT-40	ER40 X80	ER40	80	65.4	63	UM(Round Type)
BT-40	ER40 X100	ER40	100	65.4	63	UM(Round Type)
BT-40	ER40 X120	ER40	120	65.4	63	UM(Round Type)
BT-40	ER40 X150	ER40	150	65.4	63	UM(Round Type)
BT-40	ER40 X200	ER40	200	65.4	63	UM(Round Type)
BT-40	ER40 X250	ER40	250	65.4	63	UM(Round Type)
BT-50	ER16 X100	ER16	100	101.8	28	A(Hex. Type)
BT-50	ER16 X150	ER16	150	101.8	28	A(Hex. Type)
BT-50	ER20 X100	ER20	100	101.8	34	A(Hex. Type)
BT-50	ER20 X150	ER20	150	101.8	34	A(Hex. Type)
BT-50	ER25 X100	ER25	100	101.8	42	UM(Round Type)
BT-50	ER25 X150	ER25	150	101.8	42	UM(Round Type)
BT-50	ER25 X200	ER25	200	101.8	42	UM(Round Type)
BT-50	ER25 X250	ER25	250	101.8	42	UM(Round Type)
BT-50	ER32 X100	ER32	100	101.8	50	UM(Round Type)
BT-50	ER32 X150	ER32	150	101.8	50	UM(Round Type)
BT-50	ER32 X200	ER32	200	101.8	50	UM(Round Type)
BT-50	ER32 X250	ER32	250	101.8	50	UM(Round Type)
BT-50	ER40 X100	ER40	100	101.8	63	UM(Round Type)
BT-50	ER40 X150	ER40	150	101.8	63	UM(Round Type)
BT-50	ER40 X200	ER40	200	101.8	63	UM(Round Type)
BT-50	ER40 X250	ER40	250	101.8	63	UM(Round Type)



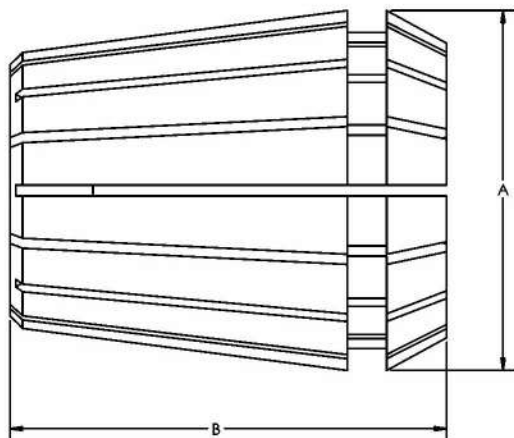
SHANK TAPER	SIZE	Ød	L1	L	L2	ØD
BT-30	16X40	16	40	48.4	17	35
BT-30	16X80	16	80	48.4	17	35
BT-30	22X45	22	45	48.4	19	45
BT-30	22X90	22	90	48.4	19	45
BT-30	27X45	27	45	48.4	21	52
BT-30	27X90	27	90	48.4	21	52
BT-30	32X90	32	90	48.4	21	58
BT-40	16X60	16	60	65.4	17	35
BT-40	16X100	16	100	65.4	17	35
BT-40	16X150	16	150	65.4	17	35
BT-40	16X200	16	200	65.4	17	35
BT-40	22X50	22	50	65.4	19	45
BT-40	22X100	22	100	65.4	19	45
BT-40	22X150	22	150	65.4	19	45
BT-40	22X200	22	200	65.4	19	45
BT-40	22X250	22	250	65.4	19	45
BT-40	22X300	22	300	65.4	19	45
BT-40	22X350	22	350	65.4	19	45
BT-40	27X60	27	60	65.4	21	52
BT-40	27X100	27	100	65.4	21	52

BT-40	27X150	27	150	65.4	21	52
BT-40	27X200	27	200	65.4	21	52
BT-40	27X250	27	250	65.4	21	52
BT-40	27X300	27	300	65.4	21	52
BT-40	32X70	32	70	65.4	24	58
BT-40	32X100	32	100	65.4	24	58
BT-40	32X150	32	150	65.4	24	58
BT-40	40X70	40	70	65.4	27	63
BT-40	40X100	40	100	65.4	27	63
BT-40	40X150	40	150	65.4	27	63
BT-50	16X60	16	60	101.8	17	35
BT-50	16X100	16	100	101.8	17	35
BT-50	16X150	16	150	101.8	17	35
BT-50	16X200	16	200	101.8	17	35
BT-50	22X60	22	60	101.8	19	45
BT-50	22X100	22	100	101.8	19	45
BT-50	22X150	22	150	101.8	19	45
BT-50	22X200	22	200	101.8	19	45
BT-50	22X250	22	250	101.8	19	45
BT-50	22X300	22	300	101.8	19	45
BT-50	27X60	27	60	101.8	21	52
BT-50	27X100	27	100	101.8	21	52
BT-50	27X150	27	150	101.8	21	52
BT-50	27X200	27	200	101.8	21	52
BT-50	27X250	27	250	101.8	21	52
BT-50	27X300	27	300	101.8	21	52
BT-50	32X75	32	75	101.8	24	58
BT-50	32X100	32	100	101.8	24	58
BT-50	32X150	32	150	101.8	24	58
BT-50	32X200	32	200	101.8	24	58
BT-50	32X250	32	250	101.8	24	58
BT-50	40X70	40	70	101.8	27	70
BT-50	40X100	40	100	101.8	27	70
BT-50	40X150	40	150	101.8	27	70
BT-50	40X200	40	200	101.8	27	70
BT-50	40X250	40	250	101.8	27	70



SHANK TAPER	SIZE	TAPER	L1	L	$\varnothing D$
BT-30	MT-1X45	MT-1	45	48.4	25
BT-30	MT-2X60	MT-2	60	48.4	32
BT-30	MT-3X75	MT-3	75	48.4	40
BT-40	MT-1X45	MT-1	45	65.4	25
BT-40	MT-2X60	MT-2	60	65.4	32
BT-40	MT-3X75	MT-3	75	65.4	40
BT-40	MT-4X95	MT-4	95	65.4	48
BT-50	MT-1X45	MT-1	45	101.8	25
BT-50	MT-1X120	MT-1	120	101.8	25
BT-50	MT-2X45	MT-2	45	101.8	32
BT-50	MT-2X135	MT-2	135	101.8	32
BT-50	MT-3X60	MT-3	60	101.8	40
BT-50	MT-3X155	MT-3	155	101.8	40
BT-50	MT-4X85	MT-4	85	101.8	48
BT-50	MT-4X180	MT-4	180	101.8	48
BT-50	MT-5X100	MT-5	100	101.8	48
BT-50	MT-5X220	MT-5	220	101.8	48



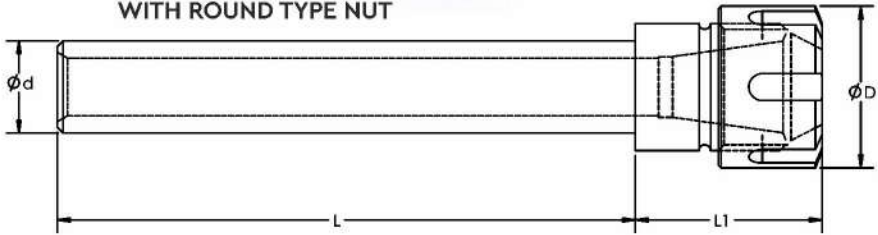


COLLET SERIES	A	B
Er 8	8.5MM (0.335in)	13.5MM (0.531in)
ER 11	11.5MM (0.453in)	18MM (0.709in)
ER 16	17MM (0.669in)	27MM (1.063in)
ER 20	21MM (0.827in)	31MM (1.220in)
ER 25	26MM (1.024in)	35MM (1.378in)
ER 32	33MM (1.299in)	40MM (1.575in)
Er 40	41MM (1.614in)	46MM (1.811in)

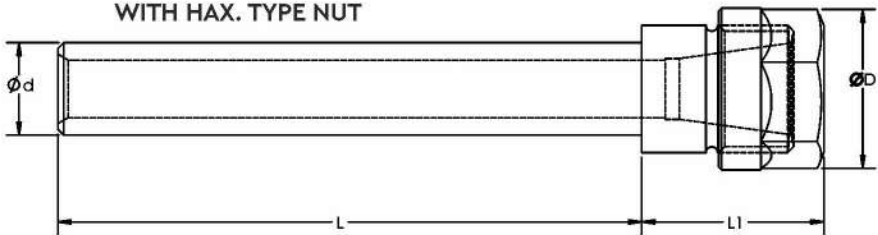
DESIGNATION	BORE RANGE $\varnothing d$	IN STEPS OF	COLLET COLLAPSES BY	NO OF PCS/SET
Er 8	1.0TO5.0	0.5	0.5	9
ER 11	1.0TO7.0	0.5	0.5	13
ER 16	1.0TO10.0	1.0	1.0	10
ER 20	2.0TO13.0	1.0	1.0	12
ER 25	2.0TO16.0	1.0	1.0	15
ER 32	3.0TO20.0	1.0	1.0	18
Er 40	4.0TO26.0	1.0	1.0	23



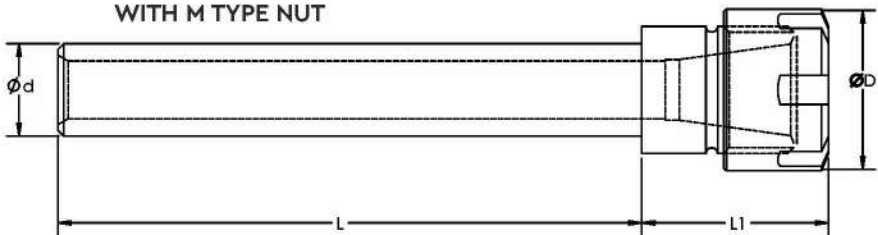
WITH ROUND TYPE NUT



WITH HAX. TYPE NUT

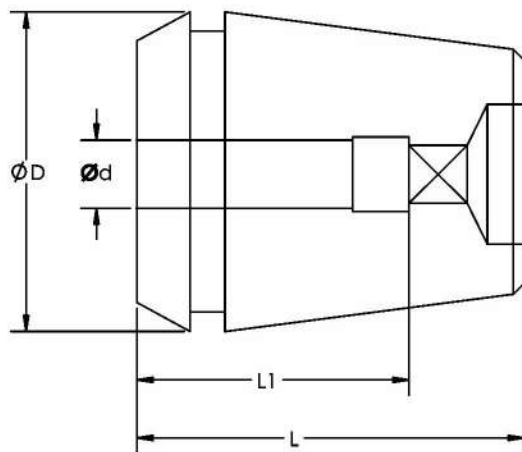


WITH M TYPE NUT





MODEL	∅d	∅D	L	L1	SUITABLE COLLET	NUT
∅10-ER8M-100	10	12	100	20	ER8	MINI
∅12-ER11M-100	12	16	100	25	ER11	MINI
∅12-ER11H-100	12	19	100	25	ER11	HEX
∅16-ER11M-100	16	16	100	25	ER11	MINI
∅16-ER11M-150	16	16	150	25	ER11	MINI
∅16-ER11H-100	16	19	100	25	ER11	HEX
∅16-ER11H-150	16	19	150	25	ER11	HEX
∅16-ER16M-100	16	22	100	35	ER16	MINI
∅16-ER16M-150	16	22	150	35	ER16	MINI
∅16-ER16H-100	16	28	100	35	ER16	HEX
∅16-ER16H-150	16	28	150	35	ER16	HEX
∅20-ER11M-100	20	16	100	25	ER11	MINI
∅20-ER16M-100	20	22	100	35	ER16	MINI
∅20-ER16M-150	20	22	150	35	ER16	MINI
∅20-ER16H-100	20	28	100	35	ER16	HEX
∅20-ER16H-150	20	28	150	35	ER16	HEX
∅20-ER20M-100	20	28	100	38	ER20	MINI
∅20-ER20M-150	20	28	150	38	ER20	MINI
∅20-ER20H-100	20	34	100	38	ER20	HEX
∅20-ER20H-150	20	34	150	38	ER20	HEX
∅20-ER25S-100	20	42	100	41	ER25	SPANNER
∅25-ER16H-100	25	28	100	35	ER16	HEX
∅25-ER16H-150	25	28	150	35	ER16	HEX
∅25-ER20H-100	25	34	100	38	ER20	HEX
∅25-ER20H-150	25	34	150	38	ER20	HEX
∅25-ER25S-100	25	42	100	41	ER25	SPANNER
∅25-ER25S-150	25	42	150	41	ER25	SPANNER
∅25-ER32S-100	25	50	100	53	ER32	SPANNER
∅32-ER25S-100	32	42	150	41	ER25	SPANNER
∅32-ER32S-100	32	50	100	53	ER32	SPANNER
∅32-ER32S-150	32	50	150	53	ER32	SPANNER
∅32-ER40S-100	32	63	100	58	ER40	SPANNER
∅40-ER25S-100	40	42	100	41	ER25	SPANNER
∅40-ER32S-100	40	50	100	53	ER32	SPANNER
∅40-ER40S-100	40	64	100	58	ER40	SPANNER



SHANK SIZE	SQUARE SIZE	ER16	ER20	ER25	ER32	ER40
3.0	2.5	ET16-3.0-2.5	ET20-3.0-2.5	ET25-3.0-2.5	ET32-3.0-2.5	ET40-3.0-2.5
3.15	2.5	ET16-3.15-2.5	ET20-3.15-2.5	ET25-3.15-2.5	ET32-3.15-2.5	ET40-3.15-2.5
3.5	2.7	ET16-3.5-2.7	ET20-3.5-2.7	ET25-3.5-2.7	ET32-3.5-2.7	ET40-3.5-2.7
3.55	2.8	ET16-3.55-2.8	ET20-3.55-2.8	ET25-3.55-2.8	ET32-3.55-2.8	ET40-3.55-2.8
4.0	3.0	ET16-4.0-3.0	ET20-4.0-3.0	ET25-4.0-3.0	ET32-4.0-3.0	ET40-4.0-3.0
4.0	3.2	ET16-4.0-3.2	ET20-4.0-3.2	ET25-4.0-3.2	ET32-4.0-3.2	ET40-4.0-3.2
4.5	3.4	ET16-4.5-3.4	ET20-4.5-3.4	ET25-4.5-3.4	ET32-4.5-3.4	ET40-4.5-3.4
5.0	4.0	ET16-5.0-4.0	ET20-5.0-4.0	ET25-5.0-4.0	ET32-5.0-4.0	ET40-5.0-4.0
5.5	4.3	ET16-5.5-4.3	ET20-5.5-4.3	ET25-5.5-4.3	ET32-5.5-4.3	ET40-5.5-4.3
5.6	4.5	ET16-5.6-4.5	ET20-5.6-4.5	ET25-5.6-4.5	ET32-5.6-4.5	ET40-5.6-4.5
6.0	4.5	ET16-6.0-4.5	ET20-6.0-4.5	ET25-6.0-4.5	ET32-6.0-4.5	ET40-6.0-4.5
6.0	4.9	ET16-6.0-4.9	ET20-6.0-4.9	ET25-6.0-4.9	ET32-6.0-4.9	ET40-6.0-4.9
6.3	5.0	ET16-6.3-5.0	ET20-6.3-5.0	ET25-6.3-5.0	ET32-6.3-5.0	ET40-6.3-5.0
7.0	5.0	ET16-7.0-5.0	ET20-7.0-5.0	ET25-7.0-5.0	ET32-7.0-5.0	ET40-7.0-5.0
7.0	5.5	ET16-7.0-5.5	ET20-7.0-5.5	ET25-7.0-5.5	ET32-7.0-5.5	ET40-7.0-5.5
7.1	5.6	ET16-7.1-5.6	ET20-7.1-5.6	ET25-7.1-5.6	ET32-7.1-5.6	ET40-7.1-5.6
8.0	6.0		ET20-8.0-6.0	ET25-8.0-6.0	ET32-8.0-6.0	ET40-8.0-6.0
8.0	6.2		ET20-8.0-6.2	ET25-8.0-6.2	ET32-8.0-6.2	ET40-8.0-6.2
8.0	6.3		ET20-8.0-6.3	ET25-8.0-6.3	ET32-8.0-6.3	ET40-8.0-6.3
8.5	6.5		ET20-8.5-6.5	ET25-8.5-6.5	ET32-8.5-6.5	ET40-8.5-6.5

9.0	7.0		ET20-9.0-7.0	ET25-9.0-7.0	ET32-9.0-7.0	ET40-9.0-7.0
10.0	8.0		ET20-10.0-8.0	ET25-10.0-8.0	ET32-10.0-8.0	ET40-10.0-8.0
10.5	8.0		ET20-10.5-8.0	ET25-10.5-8.0	ET32-10.5-8.0	ET40-10.5-8.0
11.0	9.0			ET25-11.0-9.0	ET32-11.0-9.0	ET40-11.0-9.0
11.2	9.0			ET25-11.2-9.0	ET32-11.2-9.0	ET40-11.2-9.0
12.2	9.0			ET25-12.0-9.0	ET32-12.0-9.0	ET40-12.0-9.0
12.5	10.0			ET25-12.5-10.0	ET32-12.5-10.0	ET40-12.5-10.0
14.0	11.2				ET32-14.0-11.2	ET40-14.0-11.2
14.0	11.2				ET32-14.0-11.2	ET40-14.0-11.2
15.0	12.0				ET32-15.0-12.0	ET40-15.0-12.0
16.0	12.0				ET32-16.0-12.0	ET40-16.0-12.0
16.0	12.5				ET32-16.0-12.5	ET40-16.0-12.5
17.0	13.0					ET40-17.0-13.0
18.0	14.5					ET40-18.0-14.5
18.0	14.0					ET40-18.0-14.0
19.0	15.0					ET40-19.0-15.0
20.0	16.0					ET40-20.0-16.0
20.0	15.0					ET40-20.0-15.0
22.0	18.0					ET40-22.0-18.0
22.4	18.0					ET40-22.4-18.0
25.0	20.0					ET40-25.0-20.0





ONE NAME FOR PRECISION

**Quality!**

**TOOLTECH<sup>®</sup>**  
"A" GRADE

Manufactured By:

**TOOLTECH INDUSTRIES**

28-Samrat Ind. Area, Near S.T. Workshop, Gondal Road, Rajkot (GUJ.) INDIA  
Email : [info@tooltechind.com](mailto:info@tooltechind.com) | web.: [www.tooltechind.com](http://www.tooltechind.com)